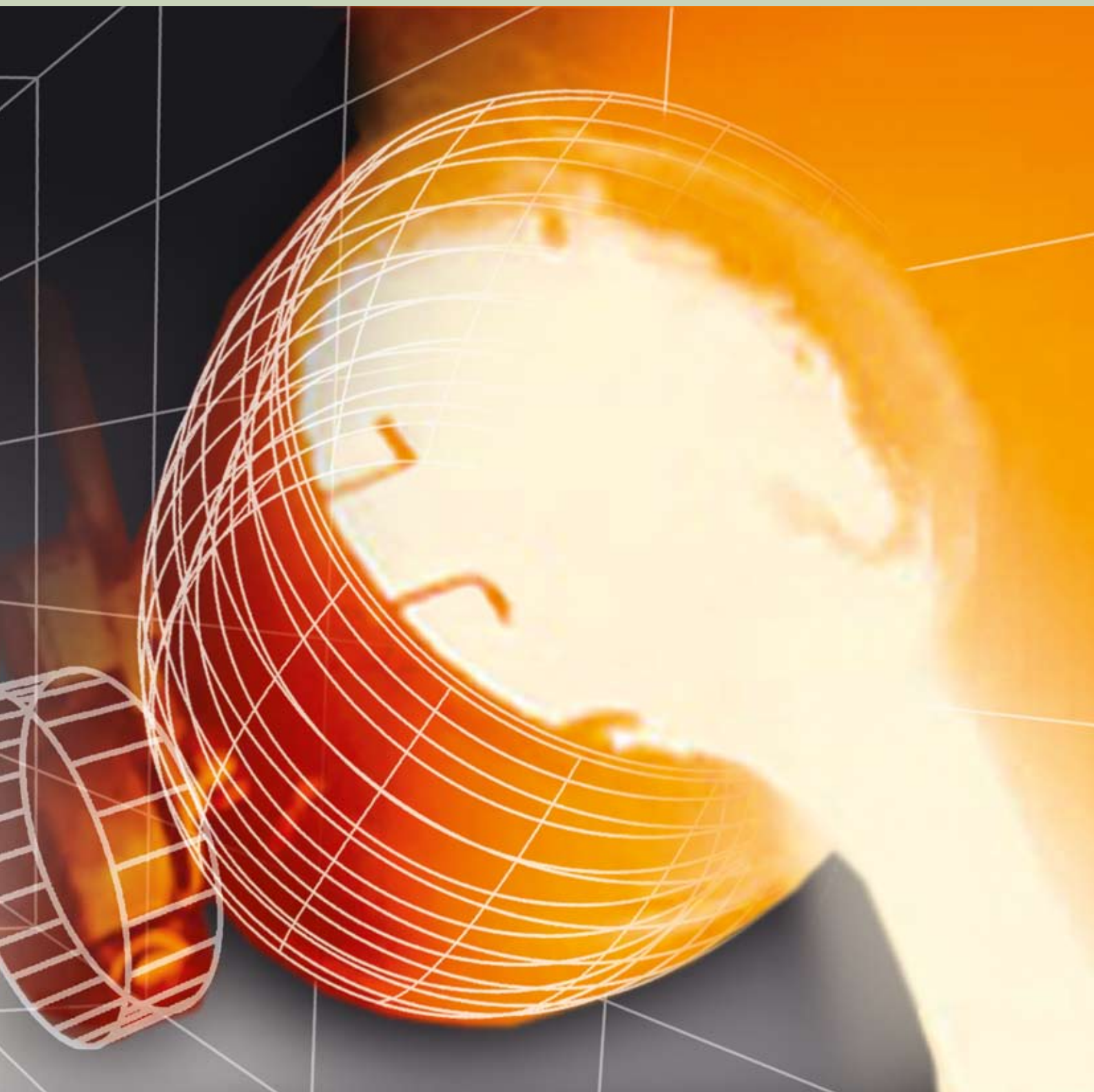




HANDELSKONTOR

von Tungeln & Cie.





HANDELSKONTOR
von Tungeln & Cie.

von Tungeln & Cie. - a clear obligation for us

We have been active in the production business internationally from Bremen since 1840. Our focus lies in the Asian market, especially in China.

We always foster the Hanseatic principles of independence, fairness and reliability irrespective of where we trade. These principles continue to form the best basis for trust in close relations with customers, as they did in the past. In addition, we secure loyal, reliable foundries in this way - to the advantage of our customers, who value our modern organization, flexibility and rapid response.

The cost advantages of our manufacturing facilities are combined with German ideas of quality and reliability, thanks to many years of care and practical proof. The results are high-quality, precise products which are certified according to international standards and delivered on schedule.

We therefore combine economical costs with absolute quality, or briefly: your superiority in the market!

Our core competence: cast parts, plastic parts and forged parts

Our programme is varied for you: it includes precision casting, sand casting, chilled casting and die casting as well as drop-forged parts and plastic semi-finished goods, which are specially made according to your instructions by our producers, whose experience and know-how will convince you.

We design optimum solutions according to your wishes and instructions with our accompanying engineering services: you will be continuously attended until the product has been made ready for use and delivery.

Our team consists of highly qualified engineering from the areas of foundry casting and forging, plastics, manufacture and QM, as well as businessmen with great experience in the international production market.

Full service - solutions to problems overnight

Our handling of orders is consciously uncomplicated and quick. Our quotation will already be submitted to you 24 hours after your enquiry has been made. As a rule. As a result, you can be certain that it contains the most suitable price for you. We only require from you a (CAD) drawing and information about the material, the piece's weight and quantity, testing regulations and conditions of acceptance.

In addition, we clarify all of the technical details for you. Our local representatives monitor every stage of the production process after approval and they deal with the acceptance according to strict criteria. We also ensure optimum packaging and delivery on schedule worldwide.

Our efficient management and smooth communication ensure for you the highest transparency and information at any time about the production stage including tracing the consignment of your purchase order.

The period of delivery for primary samples is 12 weeks approx. A reduction is possible in urgent cases by arrangement.

Complete solutions

Here is yet another advantage too: we can machine moulded parts or offer them finished and assembled. It is also possible to finish components from the solid (e.g., AZ31 B), including the subsequent surface treatment. You still save on the finishing costs additionally in this way.

Quality assurance

We have our own quality engineers and offer QM which is certified according to ISO 9001: 2000. The Germanischer Lloyd classification company draws up the test certificates according to DIN EN 10024 as our cooperative partner for many years.

You receive a quality like "Made in Germany" - wherever your parts are manufactured.





Ask us about the following production processes:

- | | |
|-----------------------------------|----------------------------|
| precision casting | machine-moulding process |
| sand casting | shell-moulded casting |
| chilled casting | full-mould casting process |
| die casting of non-ferrous metals | |
| drop forging | |
| plastics processing | |
| hand-moulding process | |



Precision casting in the lost-wax process

- Low tolerances; an economical alternative to forging.
- Suitable for the highest thermal and mechanical loadings; the greatest possible constructional freedom; integration of components; no finishing by means of metal cutting; precise, smooth surfaces; low manufacturing costs.
- Improvement is possible by means of electropolishing or trovalizing; no further finishing is required.
- Steels used: GS-16CrMo4 / hard alloys G-X125CoCrW 6327 / nitriding steels GS-31 CrMoV 9 / stainless steels G-X 6 CrNi 18 9 / temper-hardening steels G-X 4 CrNiCuNb 16 4 / high-temperature steels G-X20 CrCoMo 12 2 / high-tensile steels G-X 2 NiCoMo 18 9 5 / non-ferrous metals.
- Green wax: the piece's weight is between 5 g and 20 kg., for highly sensitive use in the foodstuffs industry, medical equipment and sensor technology.
- Yellow wax: the piece's weight is between 50 g and 100 kg, e.g., for automotive parts or construction of electric motors.



Sand casting

- In all conventional ferrous materials for larger parts; the piece's weight is between 5 kg. and 1,500 kg.
- In ferrous casting, spheroidal casting and cast steel for automotive parts, construction machines, pumps and general mechanical engineering.
- Lower modelling costs compared with precision casting and a shorter lead time; surfaces are ground if necessary.



Chilled casting of non-ferrous metals

- For smaller numbers of pieces, as well as less complexity and precision.
- Lower tooling costs; the casting can be dressed and reprocessed on request.



Die casting of non-ferrous metals

- Aluminium and zinc die casting; the piece's weight is between 5 g. and 12 kg: serial manufacture of between 5,000 and 100,000 parts.
- 25 tonnes to 2,000 of mould-clamping force is possible.
- Magnesium die casting for extreme precision and the highest strength; serial manufacture from 5,000 pieces upwards.



Forged parts

- Made from C steel for high strength, suitable for mining, motor car manufacture, shipbuilding and similar applications.
- The piece's weight is between 150 g. and 25 kg., the surface can be improved on request.



Plastic parts

- For all fields of application ranging from locks via parts for the construction of apparatus and equipment to the motor car industry.
- Economical tooling costs.

A 3D wireframe grid tunnel with glowing spheres. The tunnel is formed by a grid of white lines on a dark background, receding into the distance. Several glowing spheres, also made of wireframe, are positioned along the tunnel's length. The top of the page has a light green gradient background.

Contact

HANDELSKONTOR von Tungeln & Cie.
Am Dobben 53b
28203 Bremen
Germany
Tel.: +49 421 79 400 86
Fax: +49 421 79 463 57
E-mail: info@handelskontor.biz
www.handelskontor.biz